



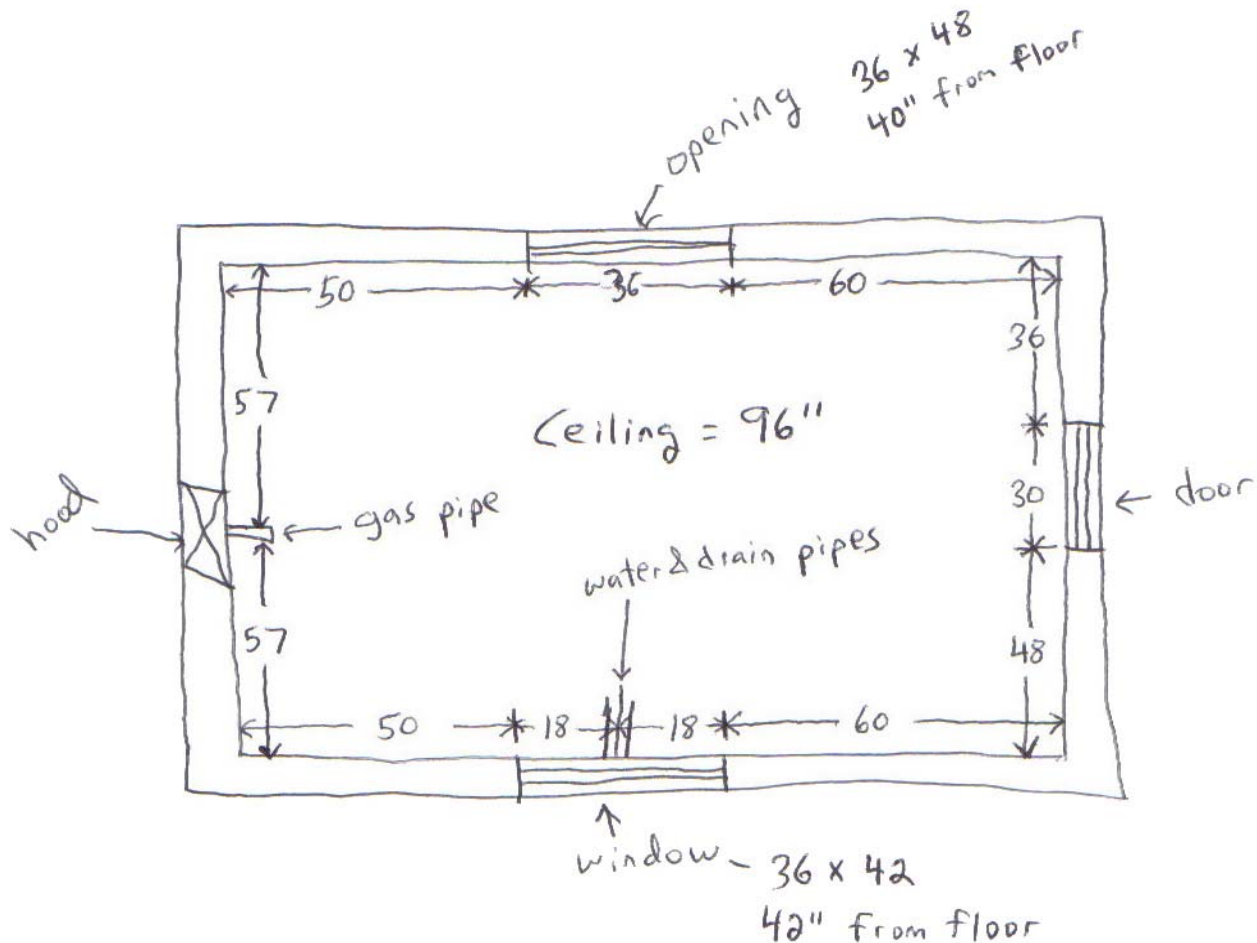
Zeek's Kitchens & Bath, Inc.

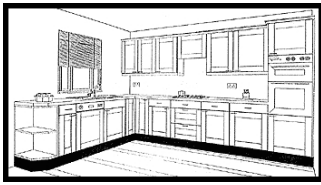
29 Main Street
Eatontown, NJ 07724

Tel: (732) 544-9001
Fax: (732) 544-8445

Floor Plan

Before any planning can start we need to have a floor plan of the kitchen with exact dimensions. To create a floor plan, first draw all the walls in your kitchen then put in the windows, doors and any other openings. Last put in the hood vent, gas line, water lines and drain pipe. The drawing does not need to be precise or to scale. Once all the items are listed then you need to measure (in inches) all the dimensions and place them on the floor plan. Measure windows, doors and openings from the outside of the molding. After you do that, then double-check all the measurements. Finally add the height of the ceiling. The drawing should look similar to the one below. In addition to the floor plan we will also need the dimensions of all the appliances including the sink. For the stove and dishwasher we need the width, for the refrigerator (and hanging microwave if you have) we need the width and height, for the sink we need the width, height and depth. If you need assistance with preparing the floor plan, you can fax or email us what you have and we can review it over the phone to make sure everything is done properly before you arrive.





Zeek's Kitchens & Bath, Inc.

29 Main Street
Eatontown, NJ 07724

Tel: (732) 544-9001
Fax: (732) 544-8445

12 Questions to Review Before Arriving

We recommend that prior to entering our showroom you review the 12 questions listed below. You do not need to have an answer to each question, but by narrowing your focus to only those preferences you feel most strongly about we will be in a much better position to make your design experience more pleasant and productive, and appropriate to your particular tastes. Remember, we can only make recommendations, ultimately, it is you that will be using your kitchen everyday. Thus it needs to reflect your unique personality.

1. Preference for a manufacturer (Schrock, Prestige, Hanssem, etc.)
2. Preference for a type of wood (Oak, Maple, Cherry, etc.)
3. Preference for a door style (Raised, Recessed, Shaker, etc.)
4. Preference for a door coating (Stain, Paint, Thermofoil, Laminate, Melamine)
5. Preference for a specific color or shade of stain
6. Preference for a glaze (white, chocolate, coffee, etc.)
7. Preference for a cabinet construction material (Plywood, Particleboard, MDF)
8. Preference for a cabinet construction (Frame, Frameless)
9. Preference for an overlay (Full, Partial, Inset)
10. Preference for a draw construction (standard box, dovetail)
11. Preference for a draw glide (epoxy, ball bearing, smart close, etc.)
12. Specialty items/cabinets you would like to have
 - a. Wine rack
 - b. Glass holder (typically under wine rack)
 - c. Plate rack
 - d. Spice rack/draw
 - e. Open cabinet (no doors)
 - f. Glass (Mullion) doors
 - g. Decorative columns, moldings, cabinet legs
 - h. Decorative corbel with shelf
 - i. Decorative oven hood
 - j. Roll out shelves
 - k. Built in garbage can bins
 - l. Tambour unit
 - m. Installed microwave (either over or below countertop)
 - n. Raised dishwasher